

Economic Dependencies Dashboard (EDD)

Understanding Your Local Economy

September 2024 – Mike Stolte

Economic Dependencies Dashboard

[Local Area Economic Profiles \(etsi-bc.ca\)](https://edd.etsi-bc.ca)

<https://edd.etsi-bc.ca>

- Launched in June 2024
- Visualizations of important ec dev data, definitions and ‘how to’ manual
- Covers 32 ‘local areas’ and all Regional Districts in ETSI-BC service area



7 Key Questions the EDD Can Help You Answer

“Can’t measure, can’t manage”

1. How **vulnerable** is my community/RD to downturns in the forest sector (and other sectors, industries)?
2. Who is **employing** us? How is that changing?
3. What are the **industries** that punch above their weight? Underperform?
4. How **diverse** is our economy?
5. How is our **population changing** compared with our neighbouring communities/RDs?
6. How can **potential investors** better understand my community/RD? How do we amp up our **profile for investors**?
7. What makes us **unique economically** as a community/ RD?

“Great source of information – double gold stars” Darren Brewer, EDO Cranbrook



At Southern Interior Level

Economic & demographic data for the Southern Interior, Regional Districts or 32 'local areas'.

Entire Region
 Regional Districts
 Local Areas
 Raw Data
 About

Focus on Basic Stats and show the Total Jobs of Regional Districts in All RACs

1

2

3

B.C. Total Jobs : 2,433,600

4

B.C. Total Jobs change: 5.6%

5

TOPIC DESCRIPTION

This topic contains basic information about each area such as population, total employment, and the types of income used in the LAED model. Two special indicators derived from the model are:

- The Diversity Index is a measure of whether an area has many or few sources of basic income.
- The Forest Sector Vulnerability Index is a measure of how dependent an area is on the forest sector specifically.

The total after-tax basic income is the sum of employment and non-employment income classified as basic income in the local area economic model, adjusted to subtract estimated taxes. The basic income share uses the area's total after-tax income as a denominator.

6

KEY INSIGHTS

Increased average number of total jobs
The average number of total jobs across the regions saw an increase, indicating a positive trend in employment opportunities between 2015 and 2020.

Job growth not uniform across regions
This growth in jobs was not uniform across all regions, as evidenced by the increase in the standard deviation, suggesting varied economic developments or challenges in different areas.

Potential economic expansion

At Southern Interior Level

Economic & demographic data for the Southern Interior, Regional Districts or 32 'local areas'.

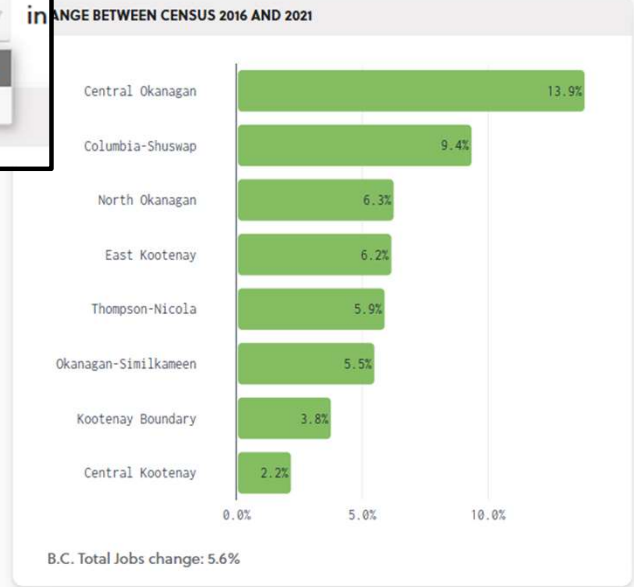
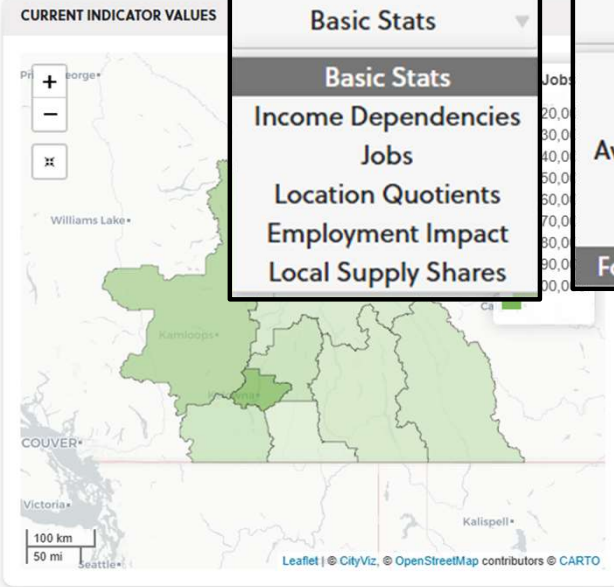
7

Focus on Basic Stats and show the Total Jobs of Regional Districts in All RACs

- Basic Stats
- Basic Stats
 - Income Dependencies
 - Jobs
 - Location Quotients
 - Employment Impact
 - Local Supply Shares

- Total Jobs
- Population
 - Total Jobs
 - Average Employment Income (\$)
 - Basic income share
 - Diversity Index
 - Forest Sector Vulnerability Index

- of Regional Districts in
- Regional Districts
 - Local Areas



TOPIC DESCRIPTION

This topic contains basic information about each area such as population, total employment, and the types of income used in the LAED model. Two special indicators derived from the model are:

1. The Diversity Index is a measure of whether an area has many or few sources of basic income.
2. The Forest Sector Vulnerability Index is a measure of how dependent an area is on the forest sector specifically.

The total after-tax basic income is the sum of employment and non-employment income classified as basic income in the local area economic model, adjusted to subtract estimated taxes. The basic income share uses the area's total after-tax income as a denominator.

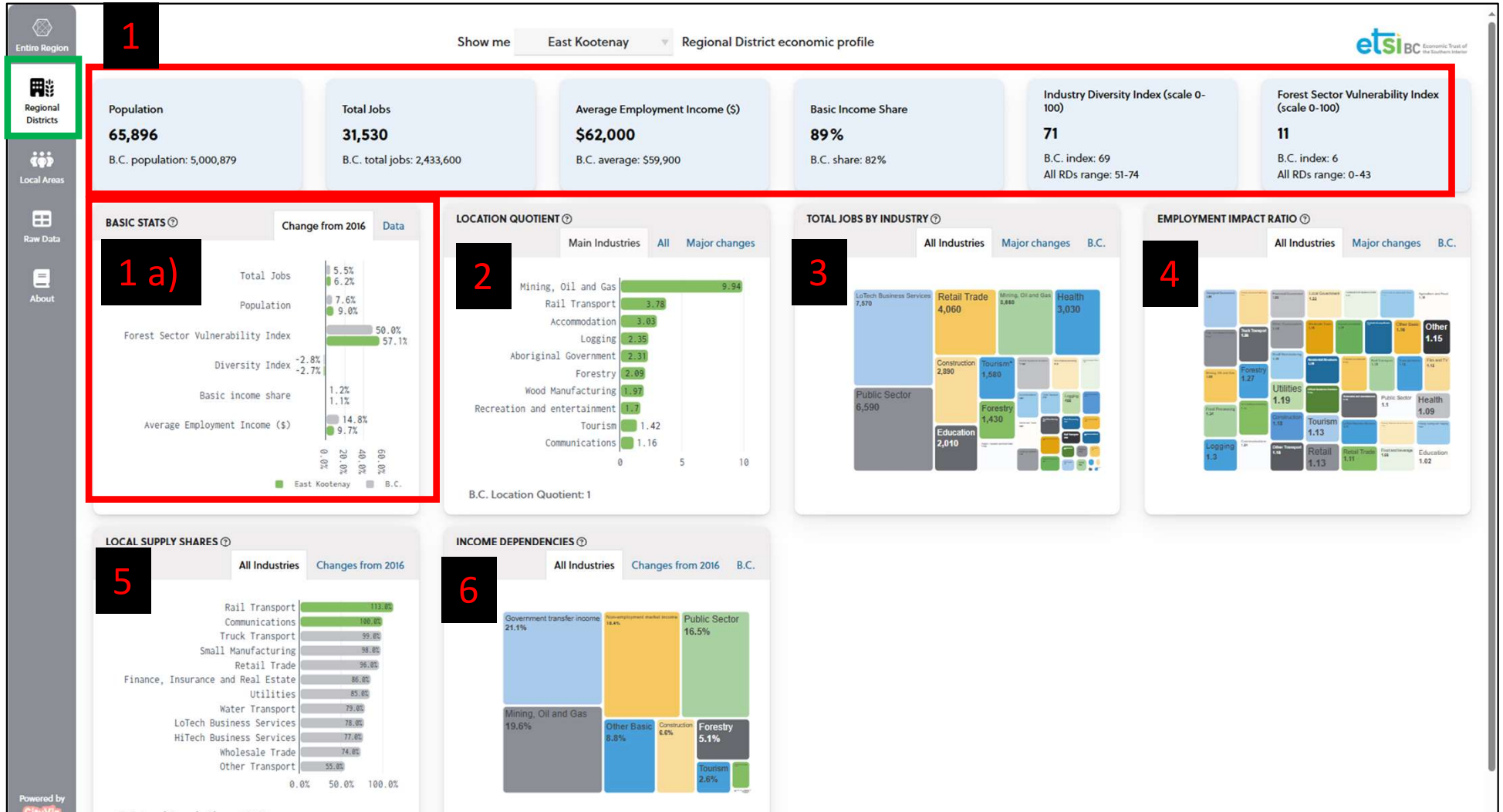
KEY INSIGHTS

Increased average number of total jobs
The average number of total jobs across the regions saw an increase, indicating a positive trend in employment opportunities between 2015 and 2020.

Job growth not uniform across regions
This growth in jobs was not uniform across all regions, as evidenced by the increase in the standard deviation, suggesting varied economic developments or challenges in different areas.

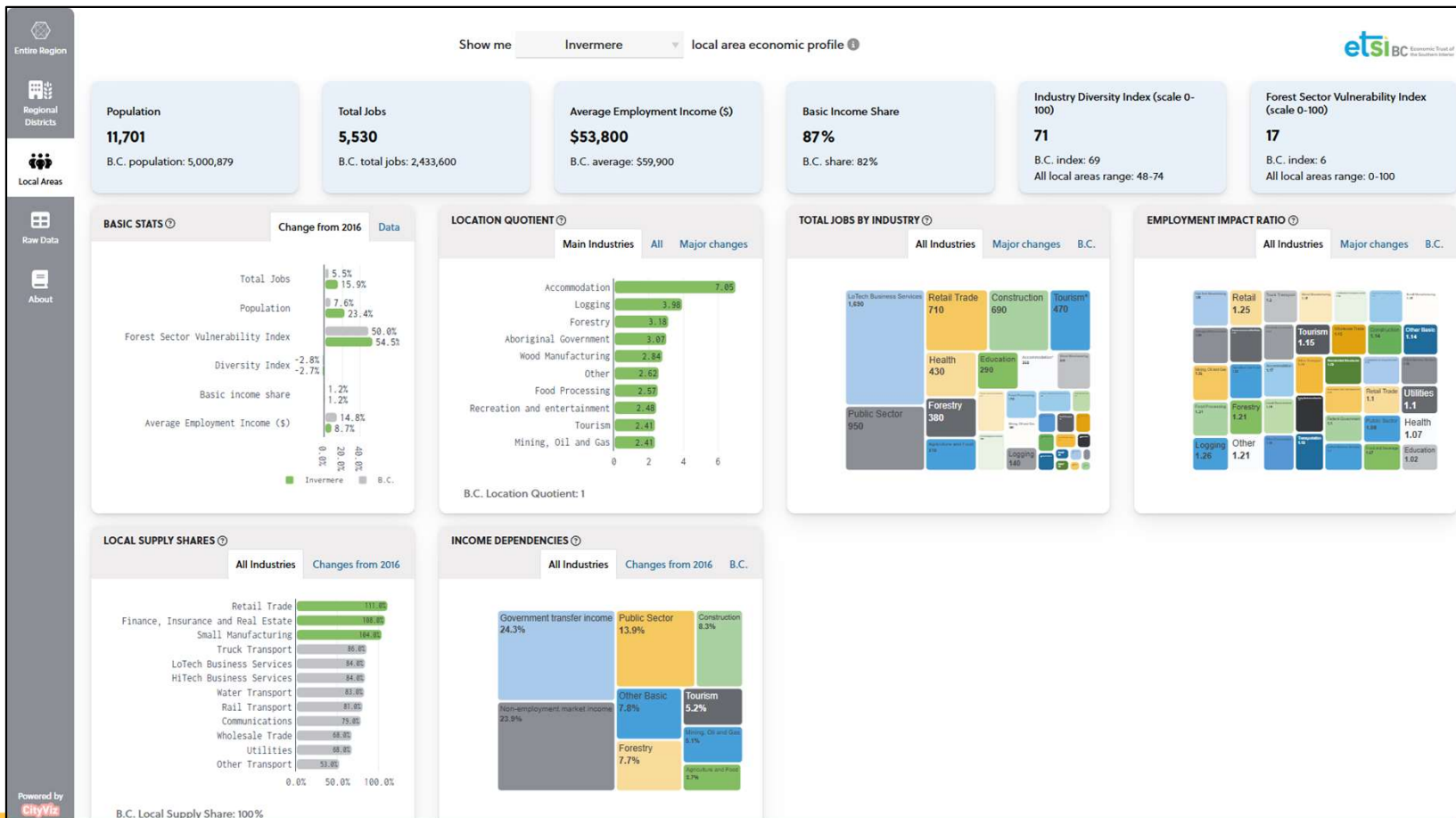
Potential economic expansion
The overall job market growth in the Southern Interior was not uniform, with some regions showing significant growth and others showing a decline. This suggests potential economic expansion in some areas, but also challenges in others.

By Regional District



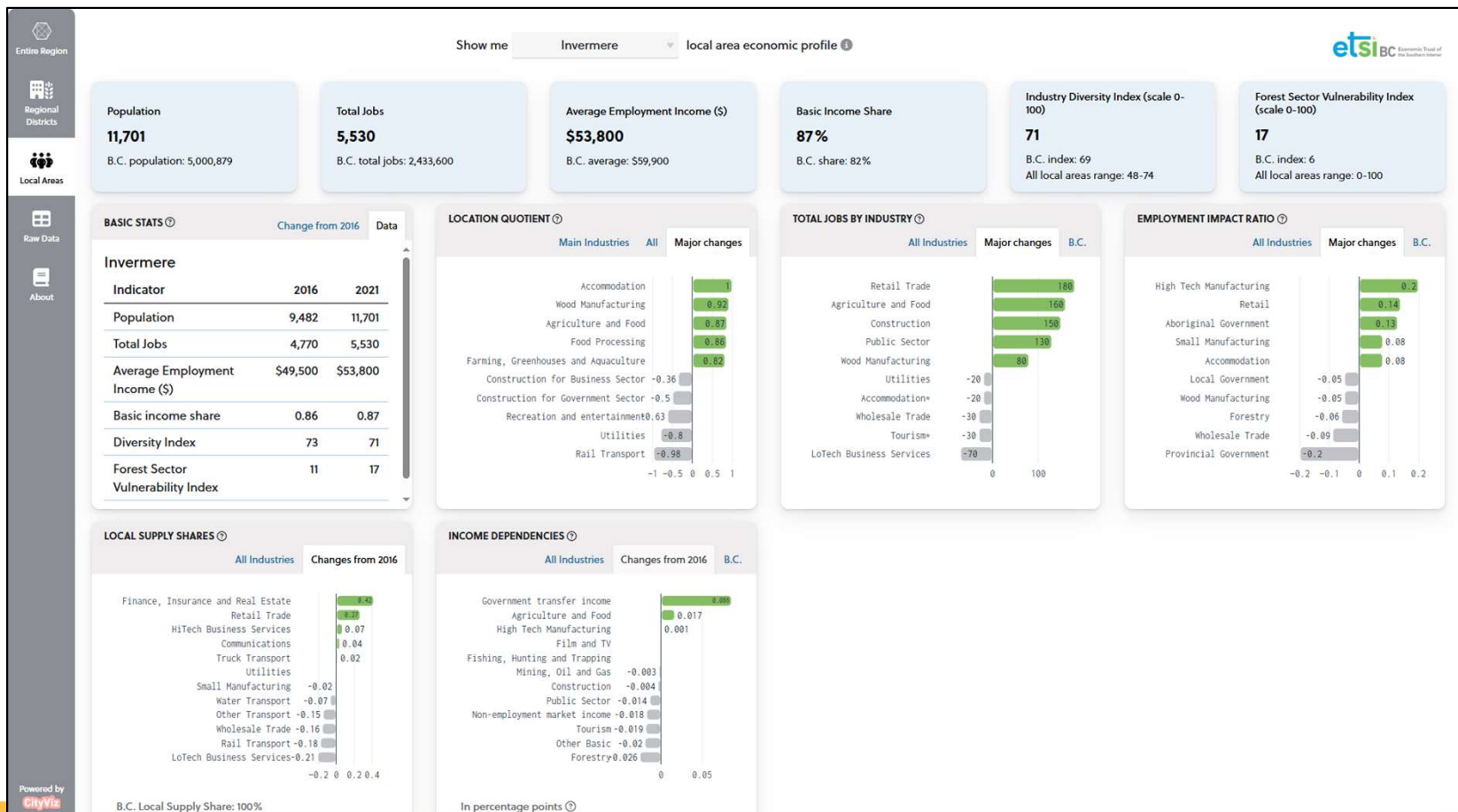
By Local Area **Default View**

Compare neighbouring communities – e.g. Cranbrook, Fernie, Invermere, Kimberley



By Local Area "Change" View

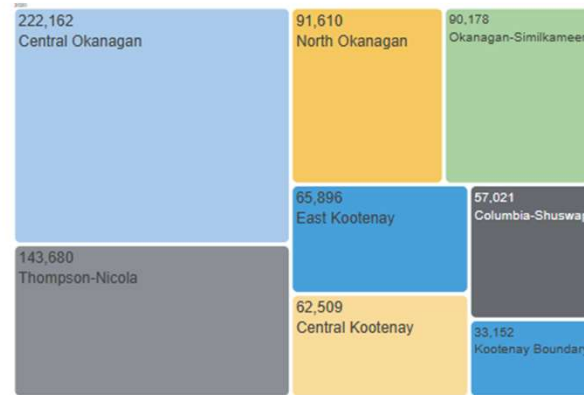
Compare neighbouring communities – e.g. Cranbrook, Fernie, Invermere, Kimberley



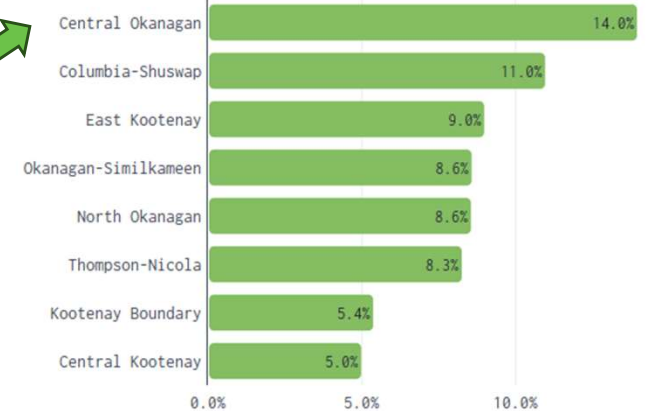
Regional Comparisons

- Displayed by relative size (size of polygon)
- Shows change between last 2 census periods
- Describes key insights

CURRENT VALUES: POPULATION



CHANGE FROM 2016-2021 CENSUS



KEY INSIGHTS

General growth trend

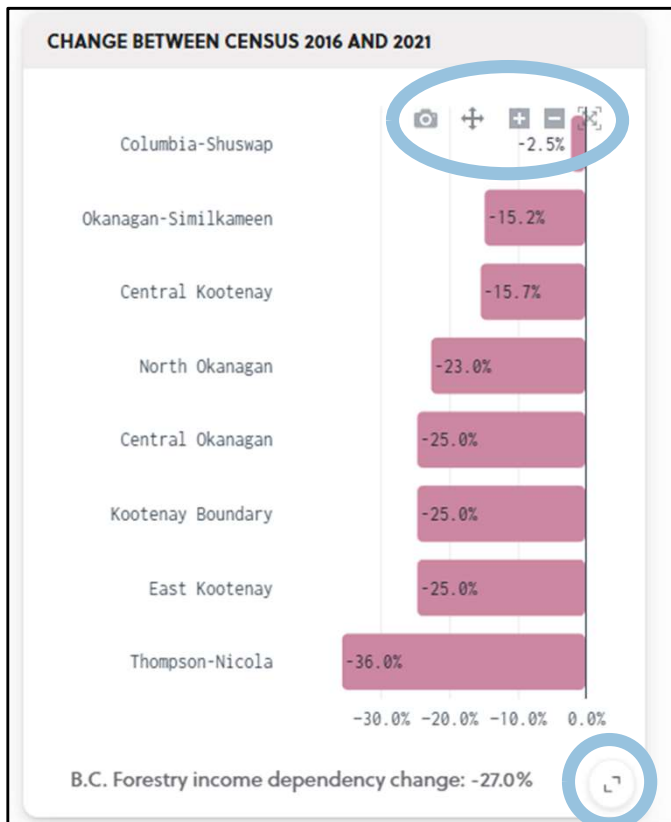
The average population across the regions increased from approximately 87,211 in 2015 to 95,776 in 2020.

Widening disparity in population sizes

The standard deviation, which measures the variation from the average, also increased.

Disparities in growth rates across different regions

The region with the maximum population growth saw an increase of 27,280 people, while the region with the minimum population growth experienced an increase of only 1,705 people.



Download a high-quality PNG file, zoom in or out, pan, or change the scale

Expand the size of the graph

Detailed info by industry & trends

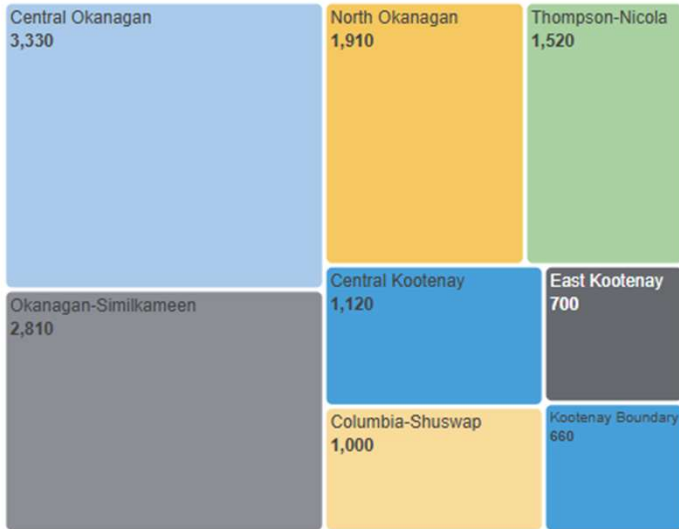
Agriculture and Food

of Regional Districts

in

All RACs

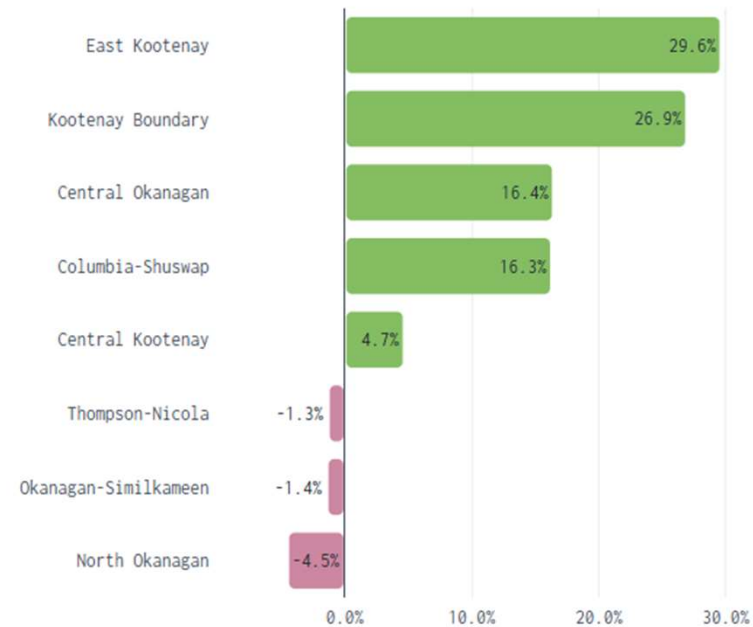
CURRENT INDICATOR VALUES



B.C. Agriculture and Food jobs: 64,200

Notes

CHANGE BETWEEN CENSUS 2016 AND 2021



B.C. Agriculture and Food jobs change: 6.2%

Forestry Sector Vulnerability Index

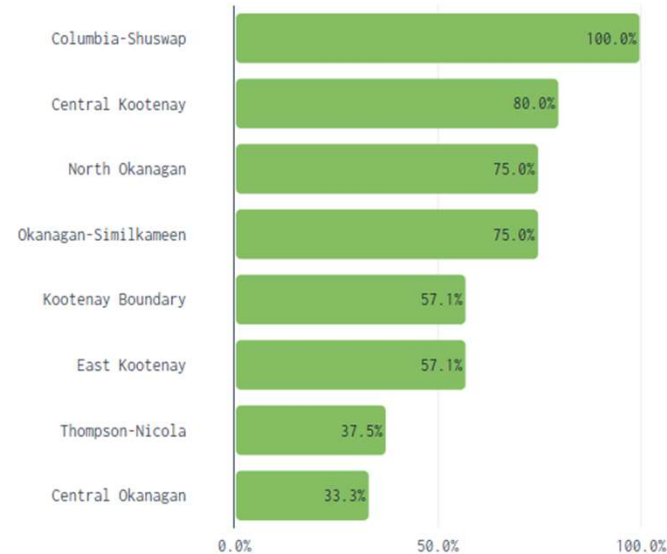
CURRENT INDICATOR VALUES



B.C. Forest Sector Vulnerability Index : 6

Notes ⓘ

CHANGE BETWEEN CENSUS 2016 AND 2021



B.C. Forest Sector Vulnerability Index change: 50.0%

KEY INSIGHTS

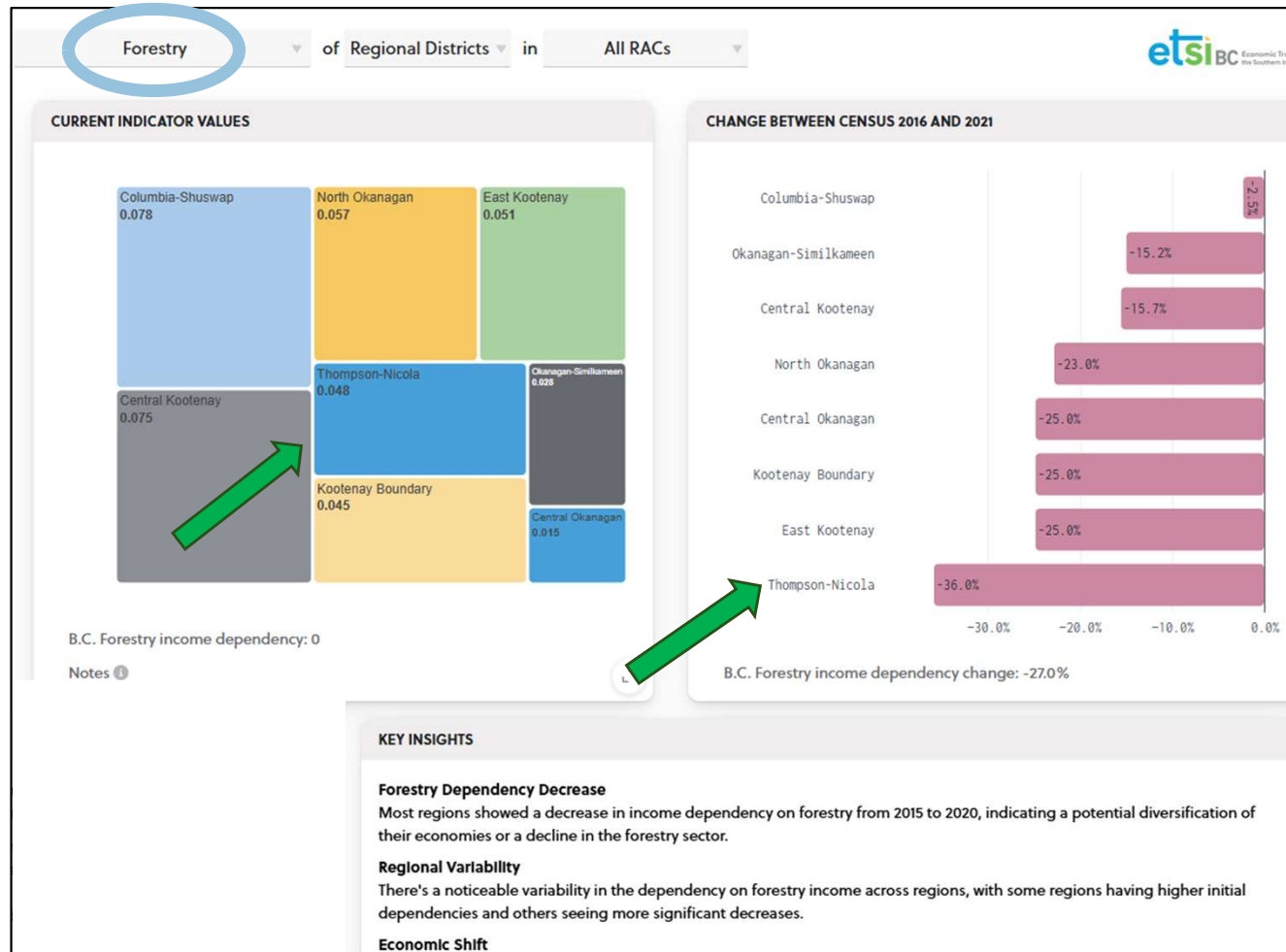
Significant vulnerability increase

The Forest Sector Vulnerability Index saw a notable rise from an average of 7.00 in 2015 to 11.75 in 2020. This sharp increase indicates a growing susceptibility of the regions to challenges impacting the forest sector, such as environmental threats, economic pressures, or regulatory changes.

Greater variability

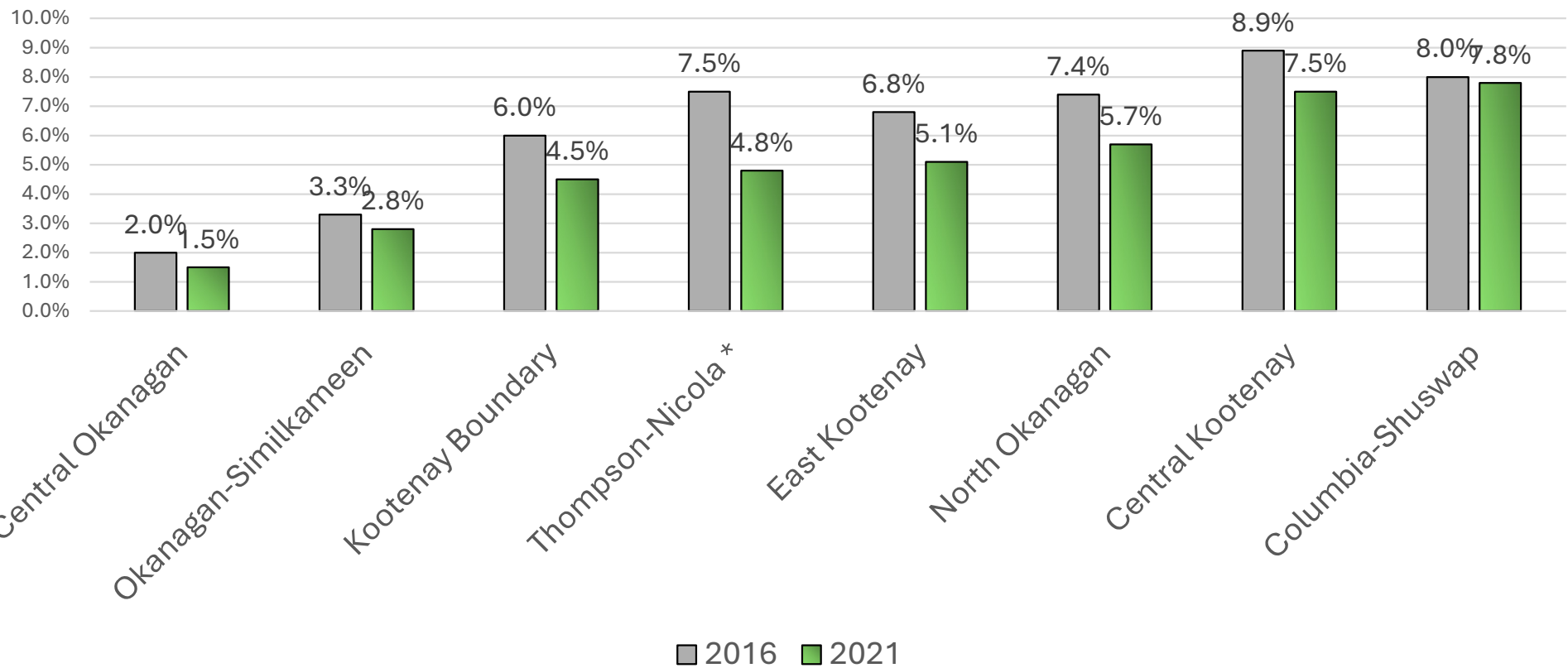
The standard deviation of the Forest Sector Vulnerability Index also increased, suggesting a widening gap in vulnerability levels among regions. This reflects diverging fortunes in the forest sector, likely influenced by local management practices, policy effectiveness, and external pressures.

Forestry Income Dependency

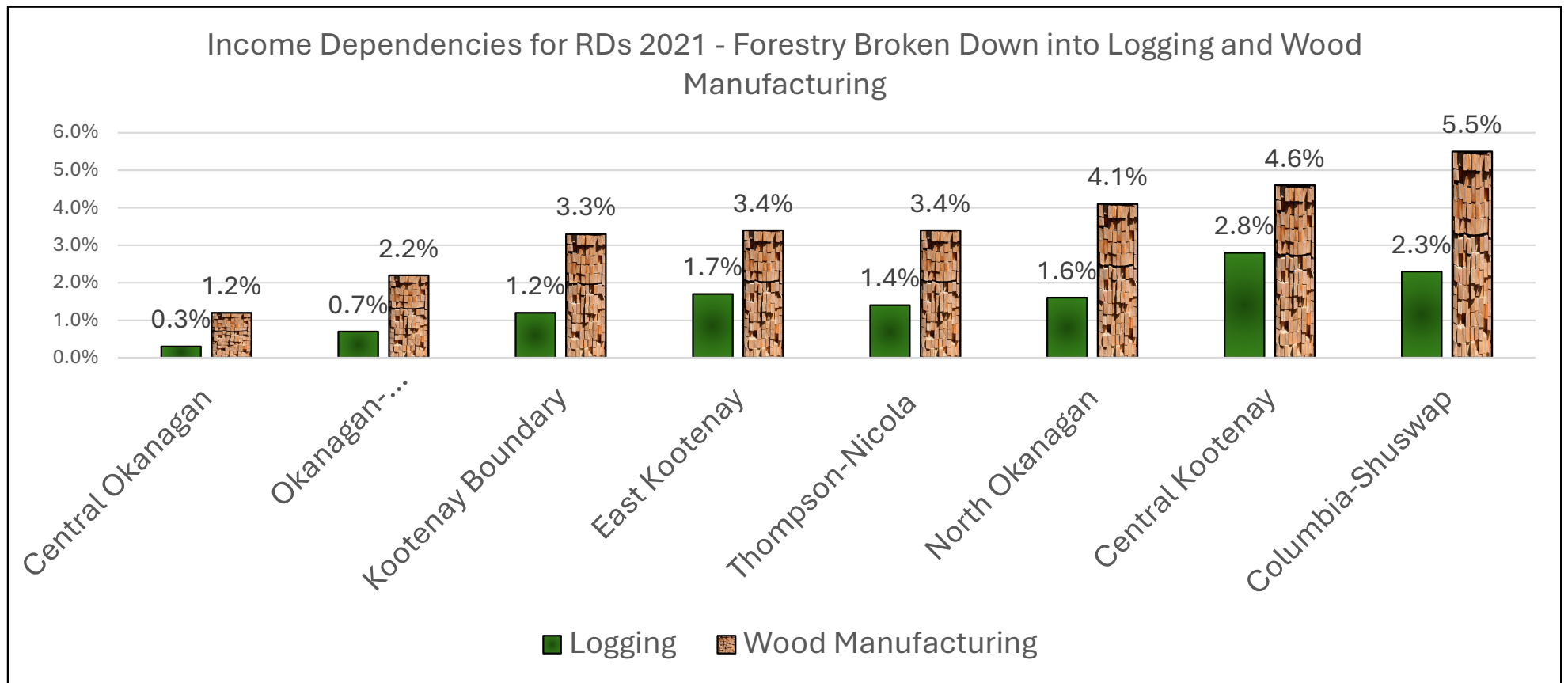


Forestry – Income Dependency for RDs – 2016 vs 2021

Forestry Income Dependencies in Each RD - 2016 & 2021

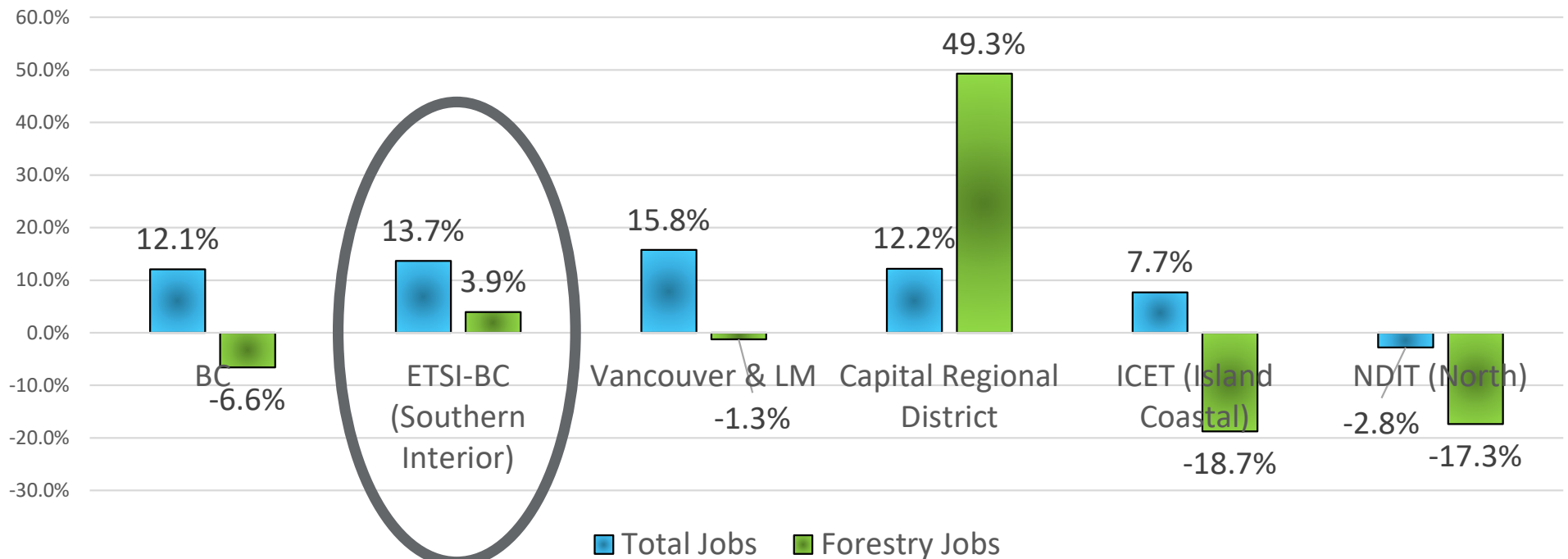


Income Dependencies for RDs 2021 - Forestry Broken Down into Logging and Wood Manufacturing

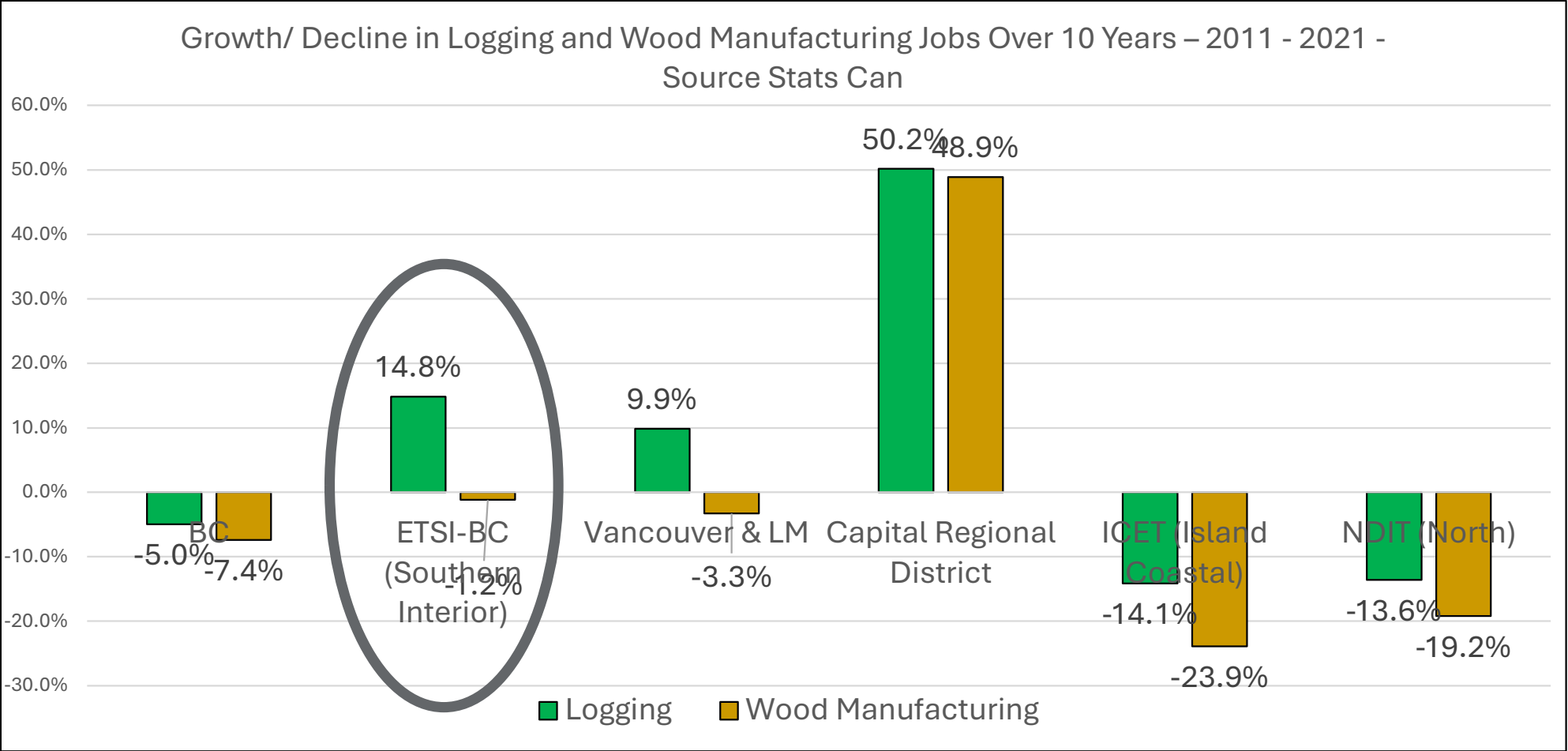


Growth/ Decline in Total Jobs vs. Forest Sector Jobs in 10 Years - 2011 - 2021

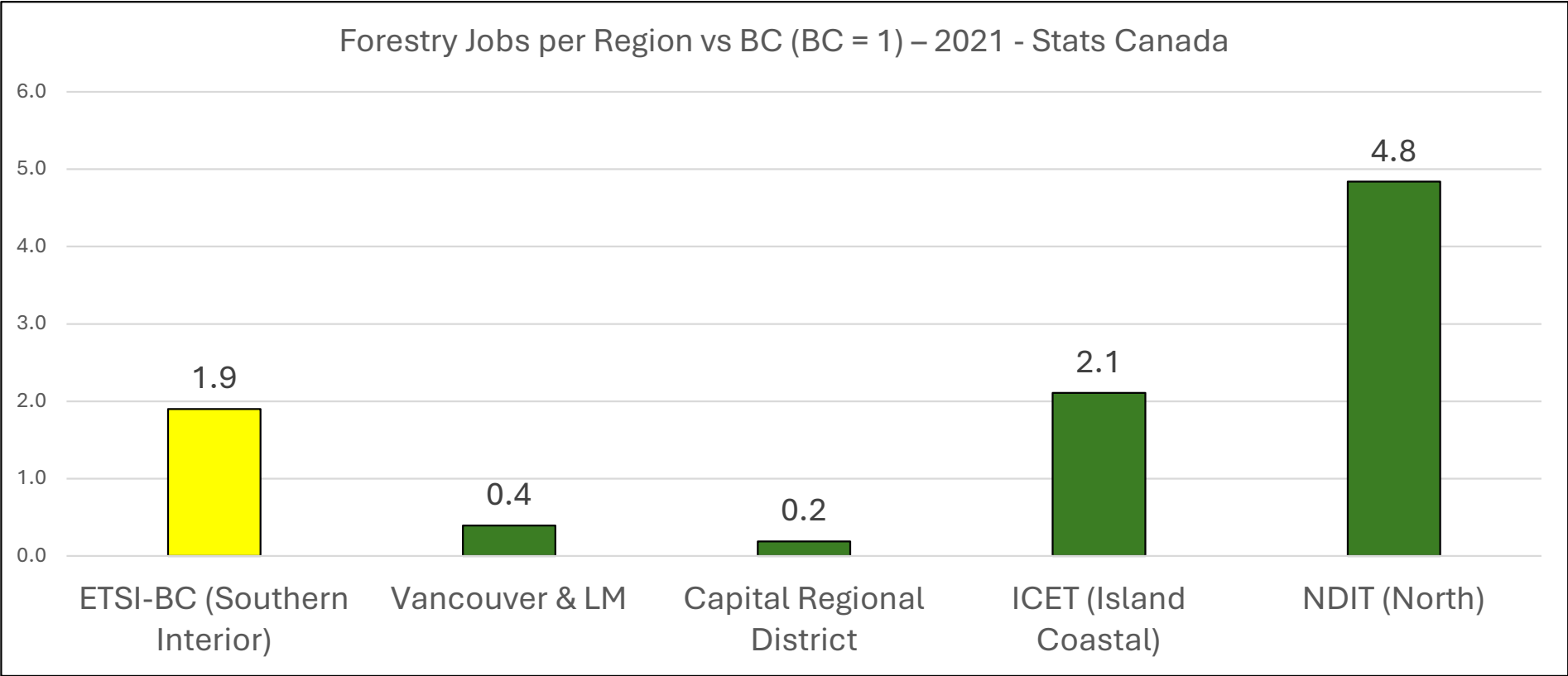
Growth/ Decline in Total Jobs vs. Forestry Sector Jobs in 10 Years – 2011 - 2021 - Source Stats Can



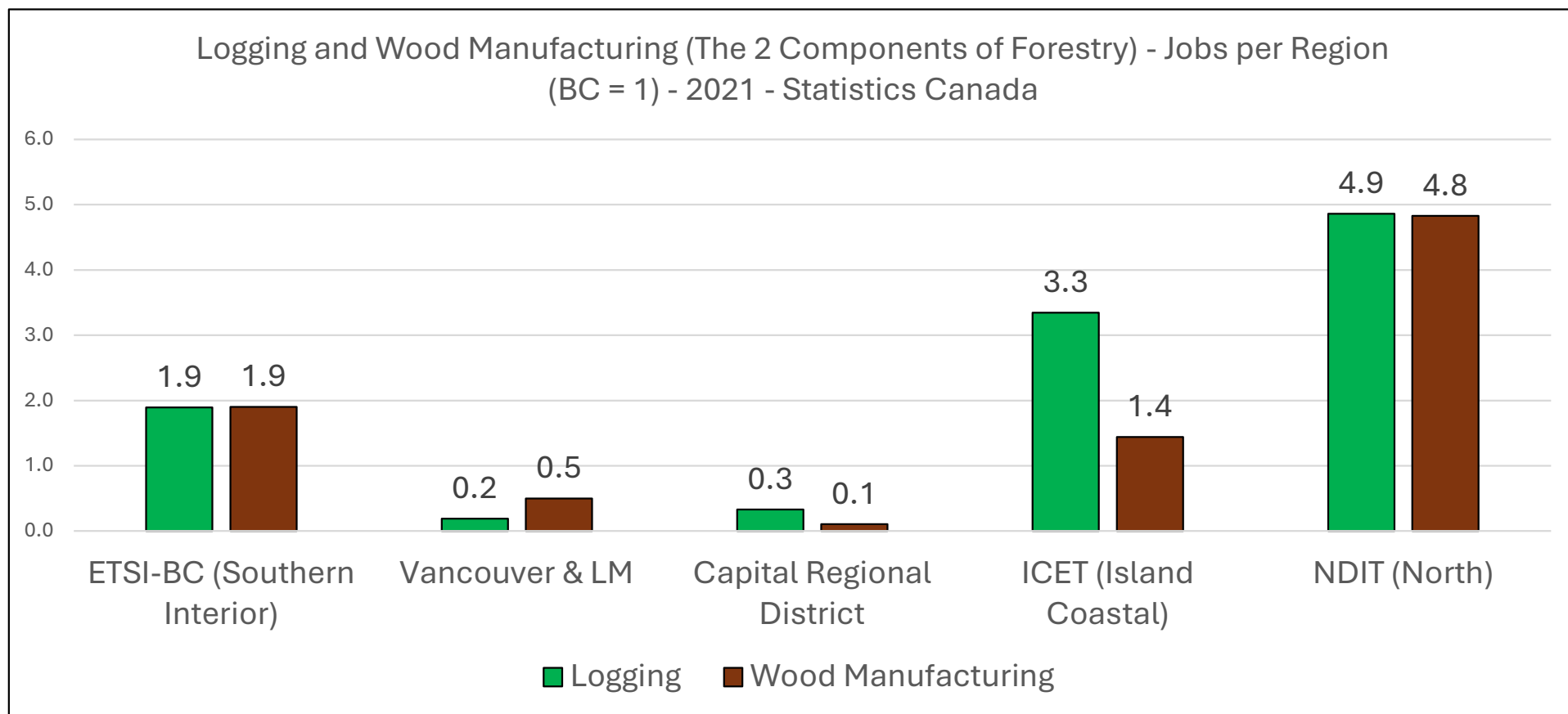
Growth/ Decline in **Logging** and **Wood Manufacturing** Jobs Over 10 Years - 2011 - 2021



Forestry Jobs Relative to Other BC Regions (BC = 1)

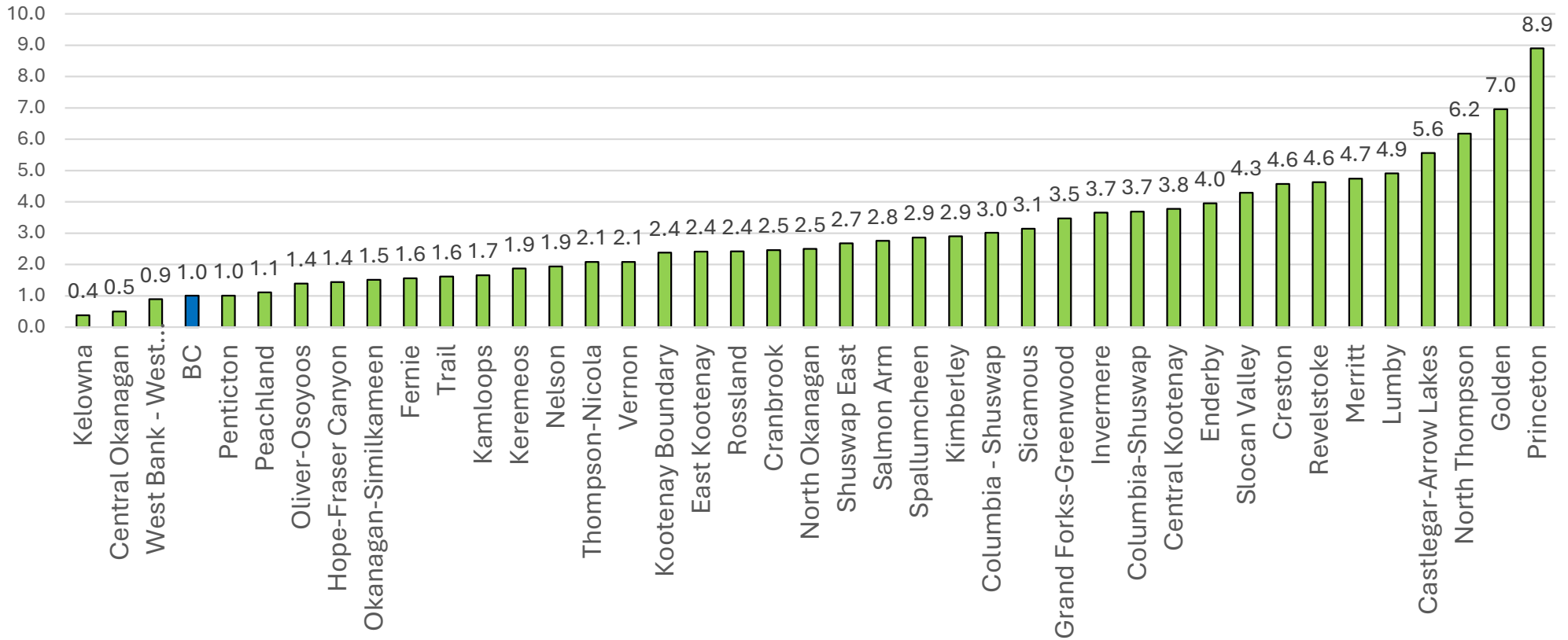


Logging and Wood Manufacturing (The 2 Components of Forestry) - Jobs per Region (BC = 1) - 2021

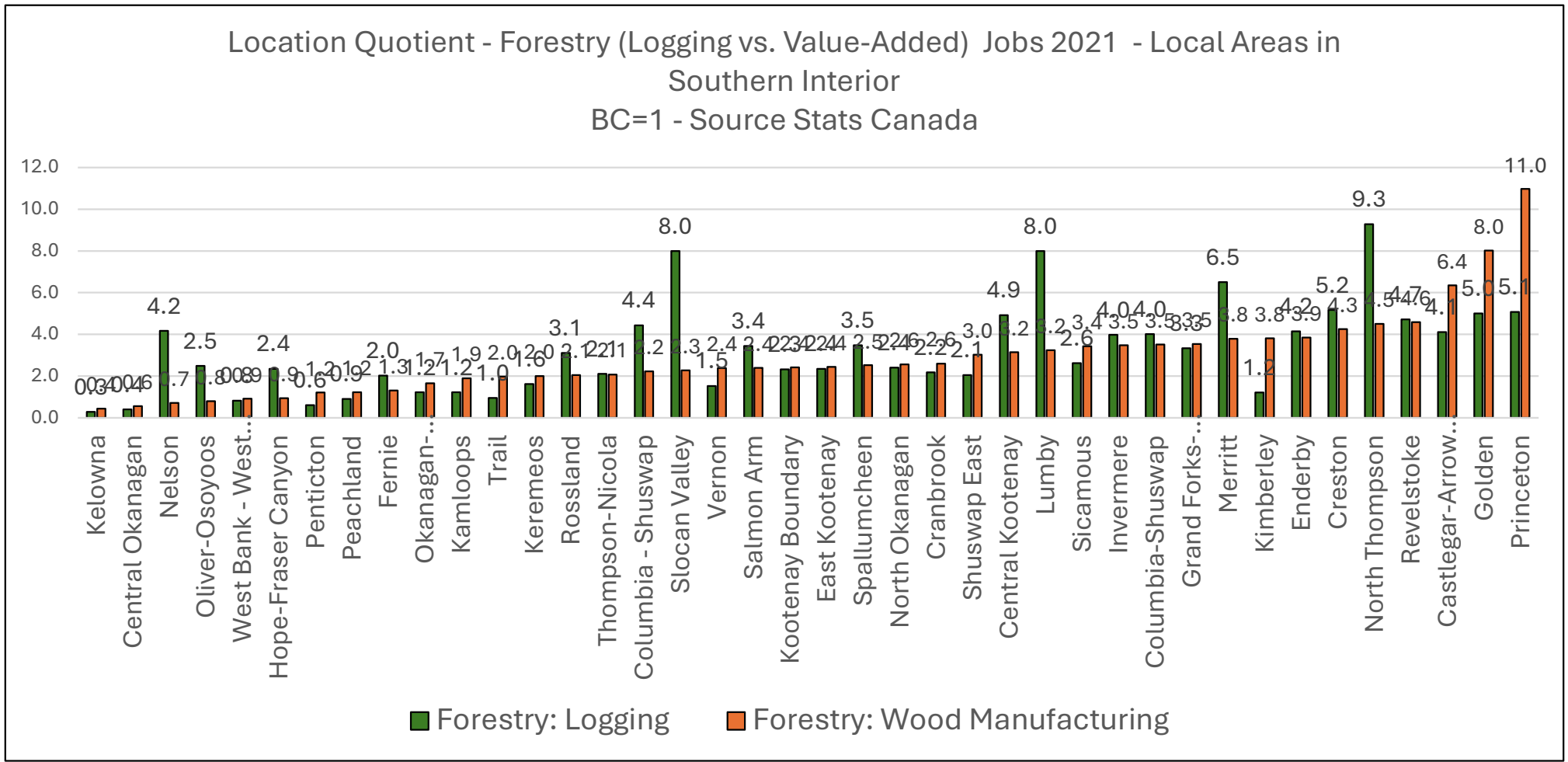


Location Quotient - TOTAL Forestry Jobs 2021 – Southern Interior Local Areas (BC =1)

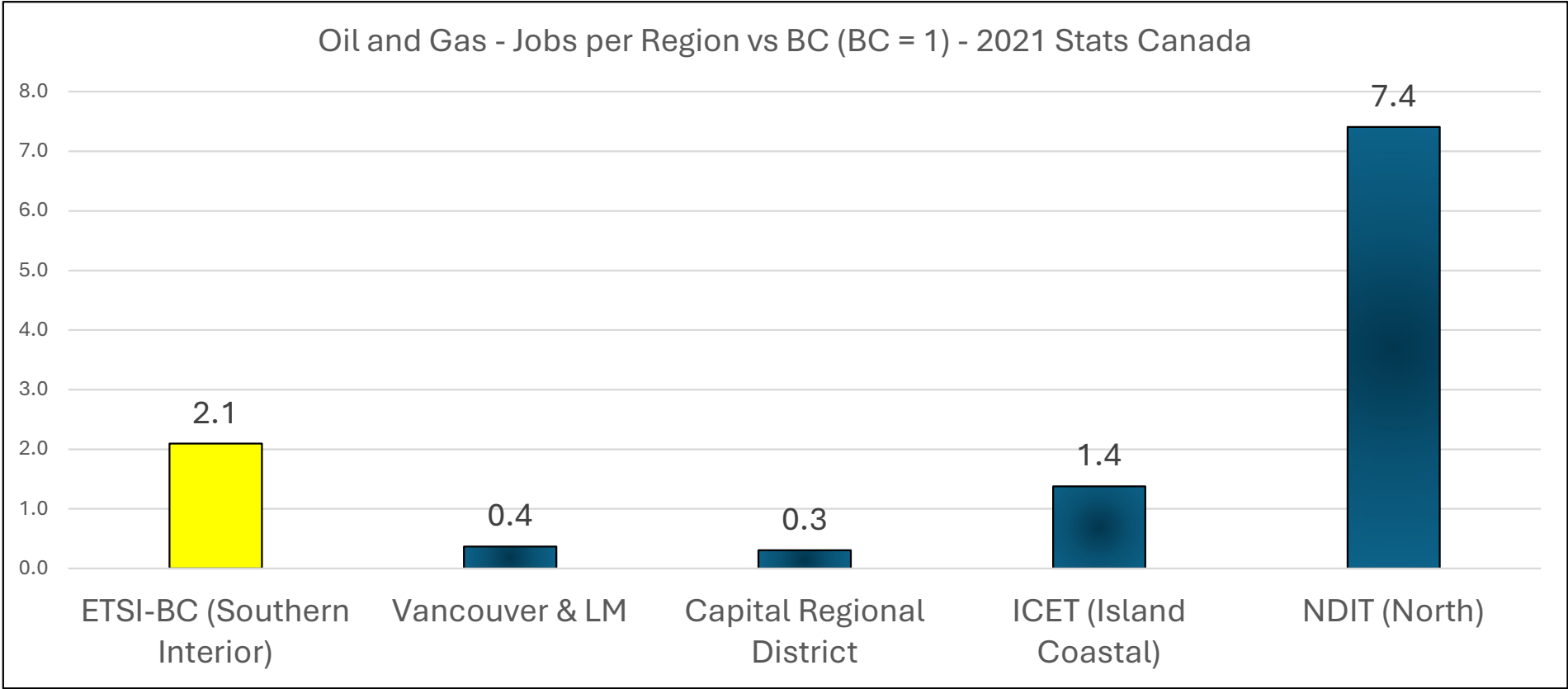
Location Quotient - Total Forestry Jobs 2021 - Local Areas in Southern Interior
BC=1 - Source Stats Canada



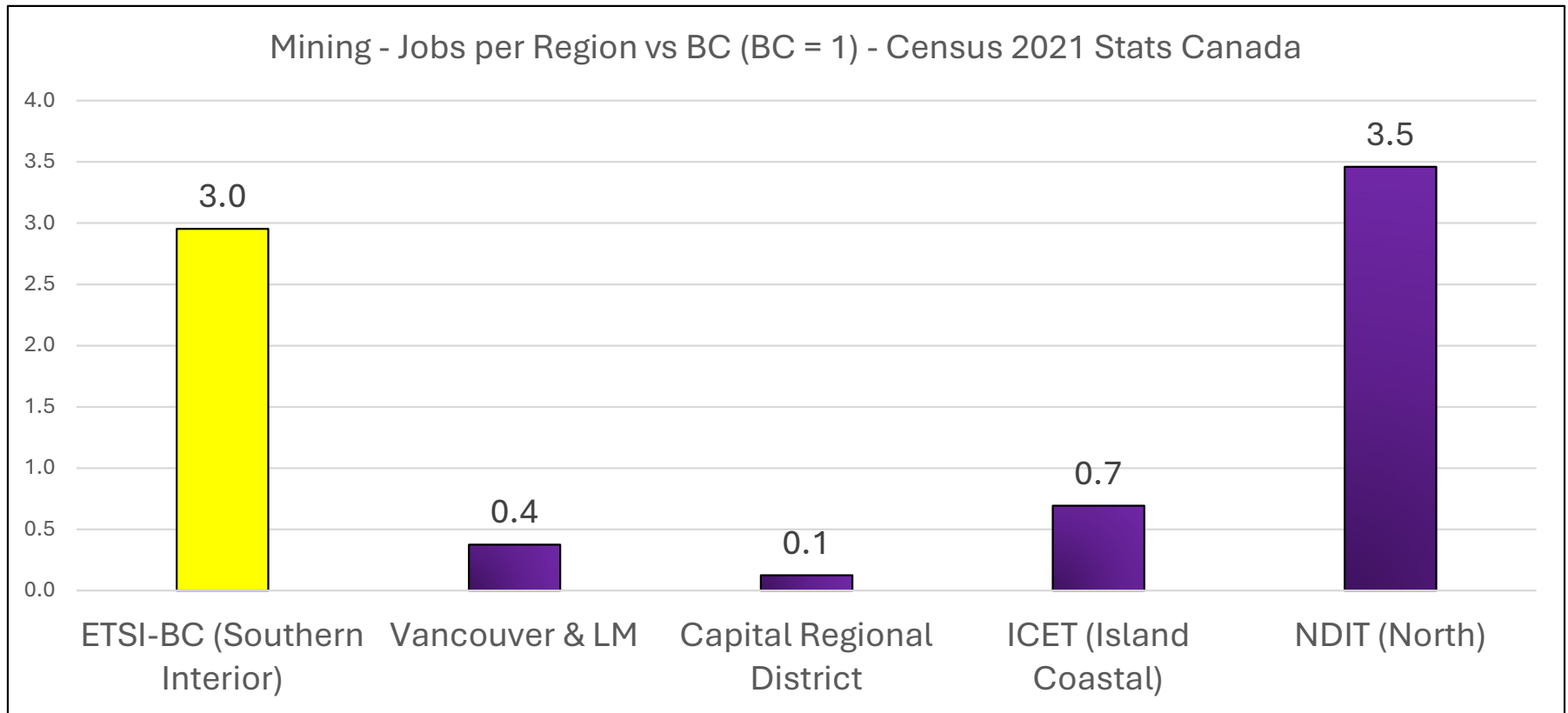
Location Quotients - Logging vs Wood Manufacturing Jobs 2021 – Southern Interior Local Areas (BC =1)



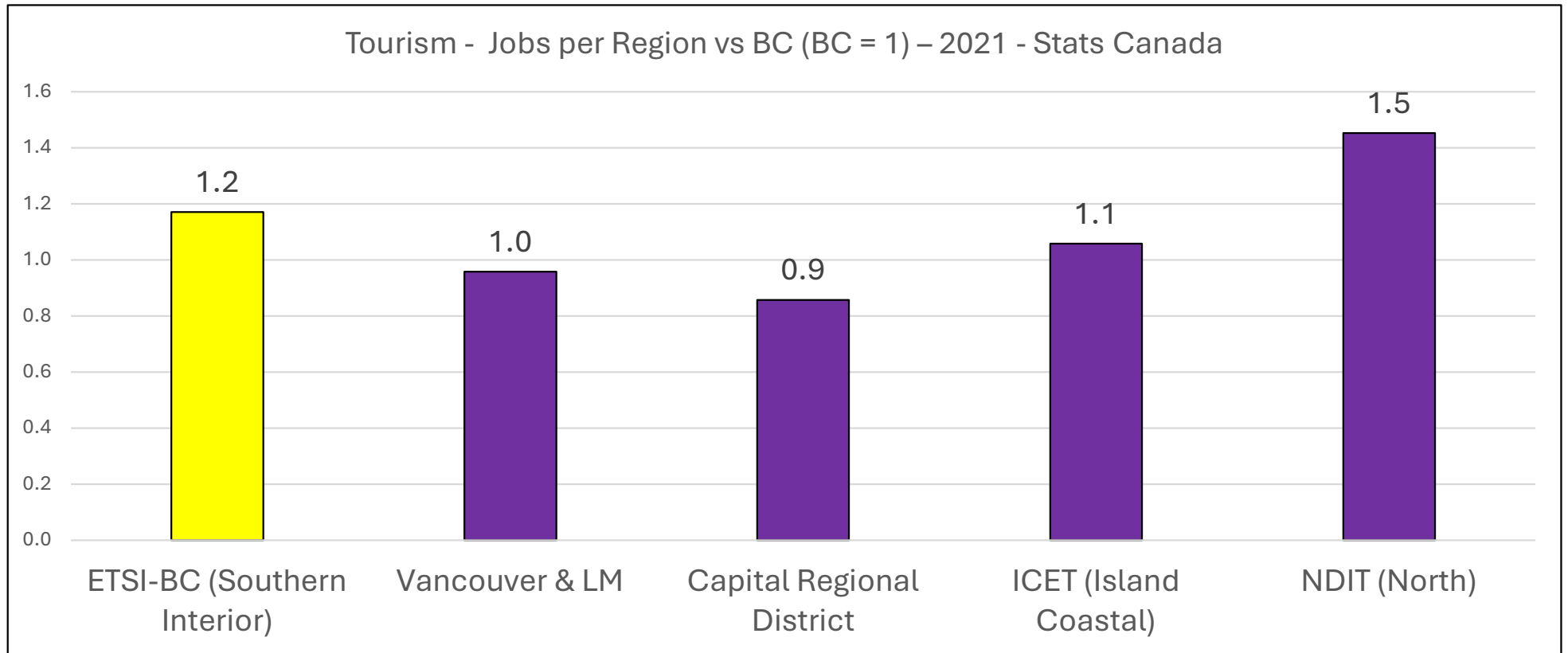
Oil and Gas - Jobs per Region vs BC (BC = 1) – 2021



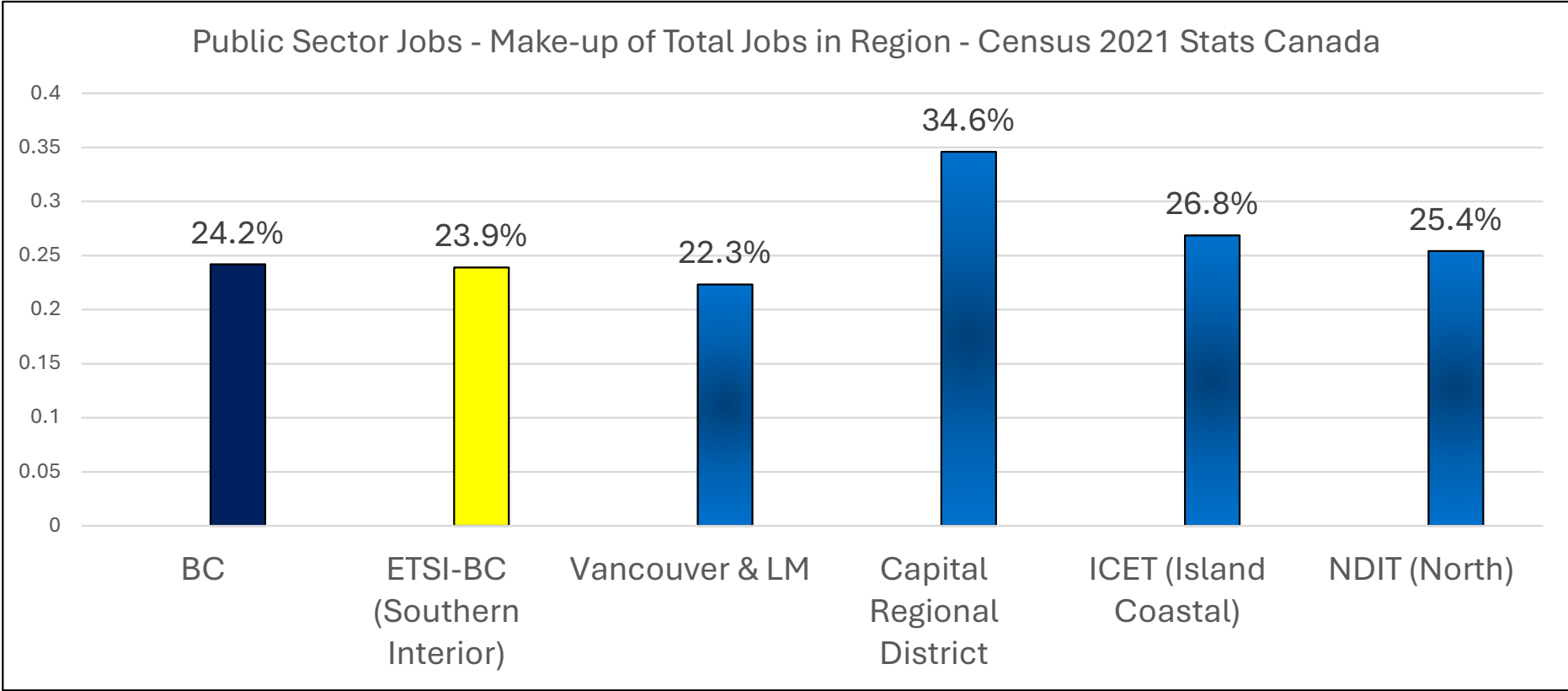
Mining - Jobs per Region vs BC (BC = 1) - 2021



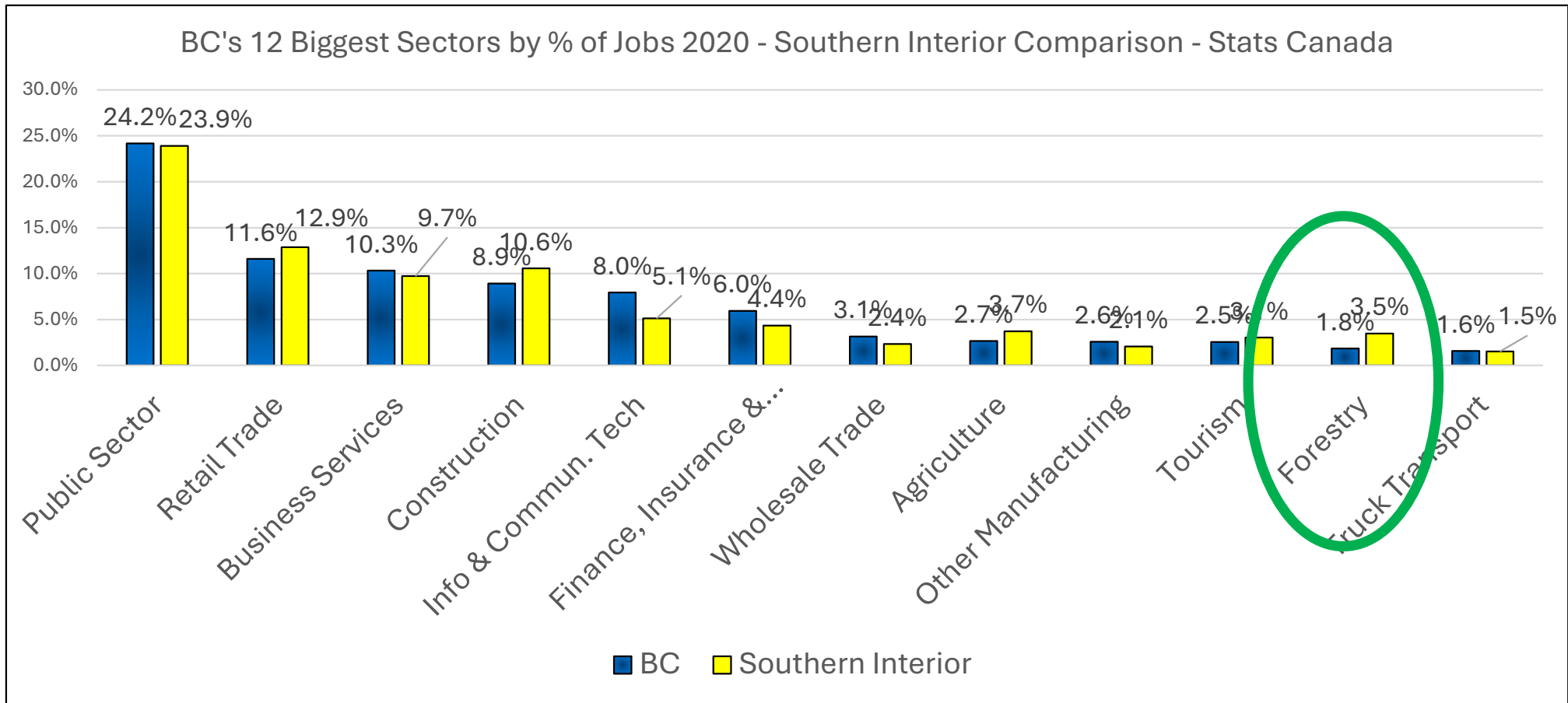
Tourism - Jobs per Region vs BC (BC = 1) - 2021



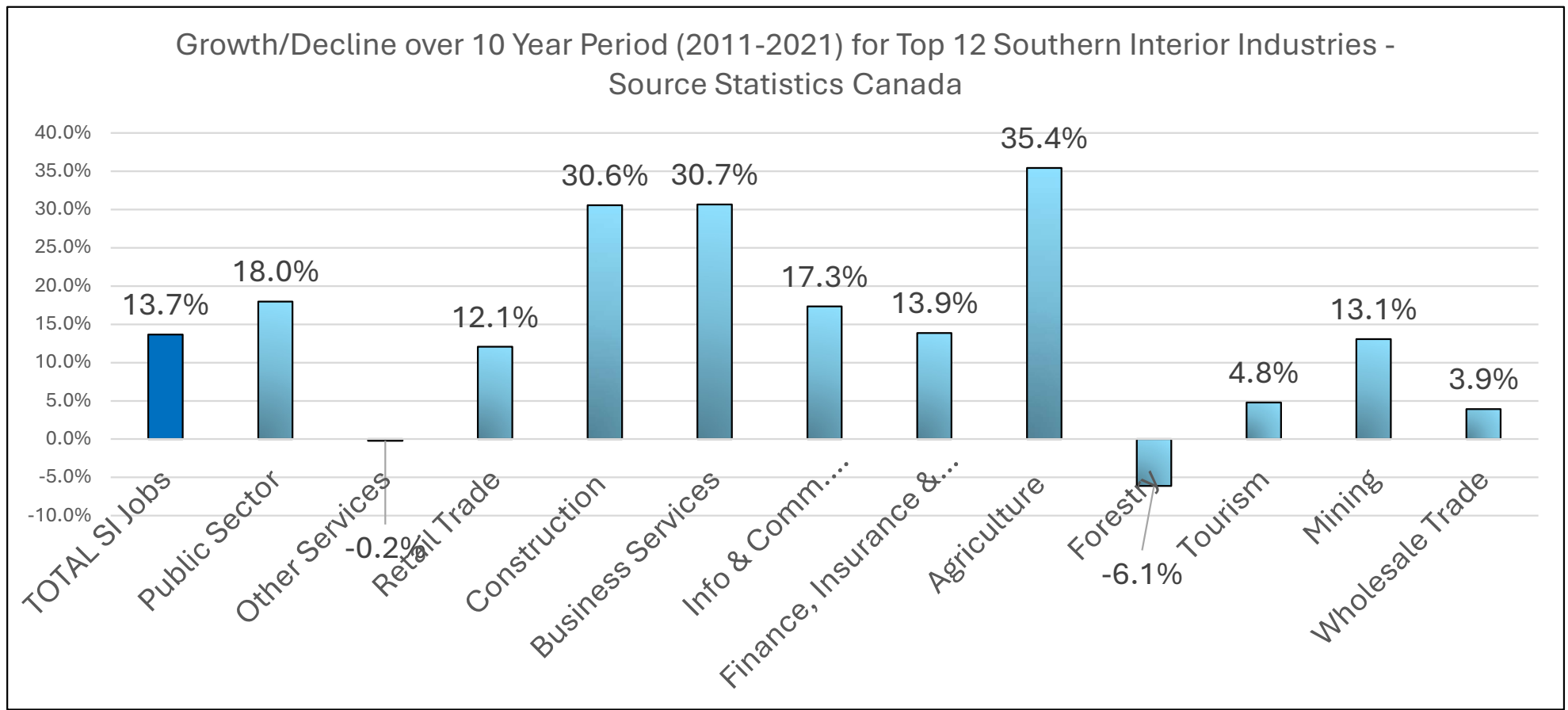
Public Sector Jobs - Make-up of Total Jobs in Region - Census 2021 Stats Canada



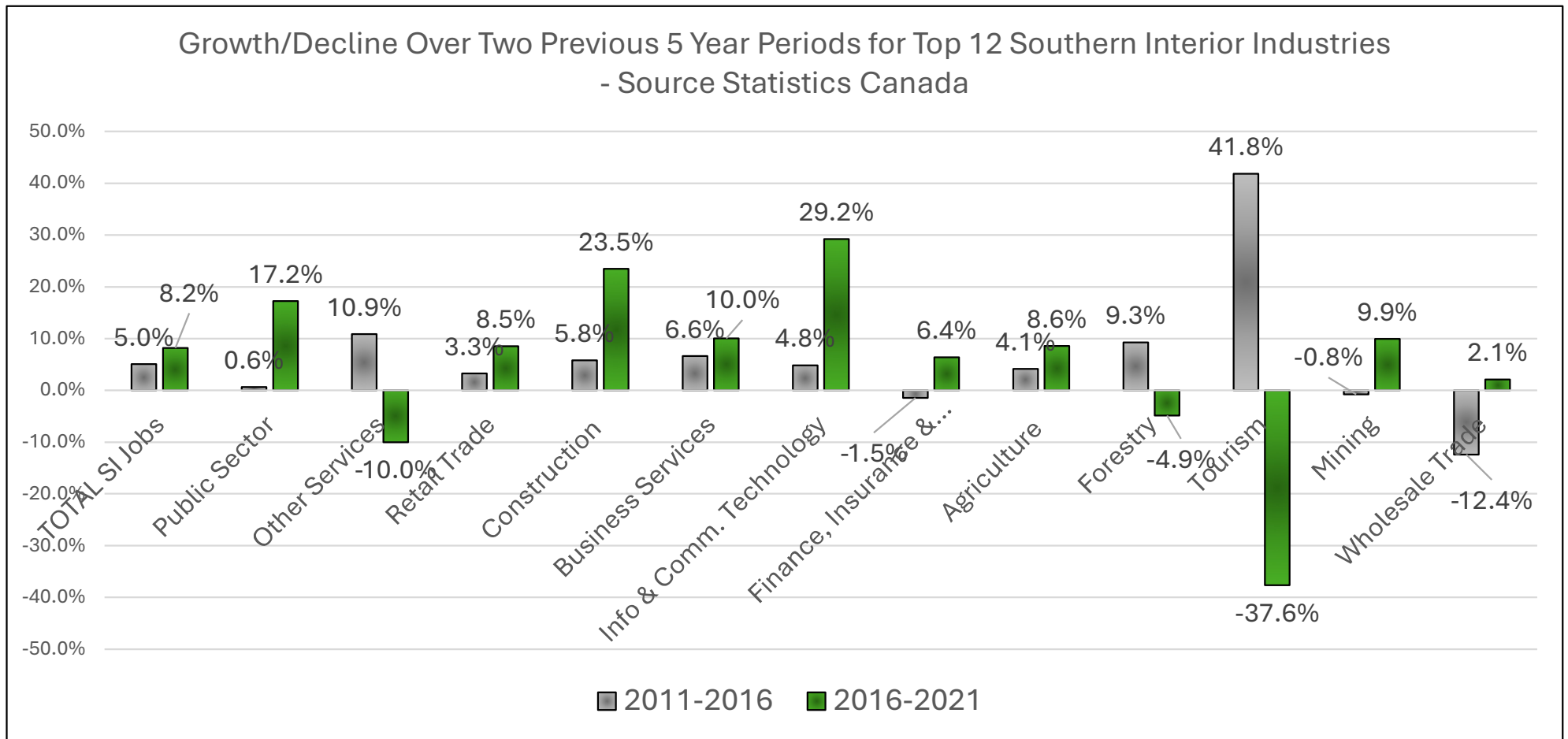
BC's Dozen Biggest Sectors by Jobs 2021 vs Southern Interior (Stats Canada)



Net Growth/Decline over 10 Year Period (2011-2021) for Top 12 by Jobs for Southern Interior Industries



Growth/ Decline Over 2 Previous Five-Year Periods for Leading Southern Interior Industries (2011-16, 2016-21)



In Summary

7 Cool Things About the EDD

1. The LAEP provides a **graphic story of the state of the economy**
 - At the Southern Interior, Regional District and Local Area levels
2. It's a **powerful, easy-to-use dashboard**
 - Drop down menus, printable graphics, easy comparisons
3. It shows **more advanced indicators** than other complementary tools
 - [Community Information Tool](#) (CIT – Province of BC)
 - [State of the Basin Community Reports](#) (Selkirk Innovates)
4. It provides both a **snapshot** in time AND the **change** over 5 years
5. It is unique in **BC** and in **Canada**
6. It can be used by a **member of the general public, a Councillor** or an **economist**, with [key insights provided](#)
7. Raw data is **downloadable** should you wish to do a custom analysis



Getting Under the Hood with Sasha Bogdanovic, the Data Visualization Guru



- What's under the hood? Tell us a little about the design
- What makes this special or different from other projects you've worked on?
- What are some real value-added pieces you've included?
- Tell us a little about using/pioneering AI with EDD

Starter Questions

1. How has your local area grown vs. your neighbours?
2. Which location quotient surprised you the most?
3. What about for income dependencies?
4. How does your average employment income differ from those of your neighbours'?
5. Other surprising findings?

Thank you! Any Questions?

Mike Stolte

www.theCIEL.com

mstolte@theCIEL.com

**Working with you to build strong
economies, stronger communities**

etsi_{BC}